



Riverbank School

TRANSITION POLICY

**Riverbank Primary School
Ripponden Mill
Mill Fold, Ripponden
HX6 4DH
Tel: 01422 415 529**

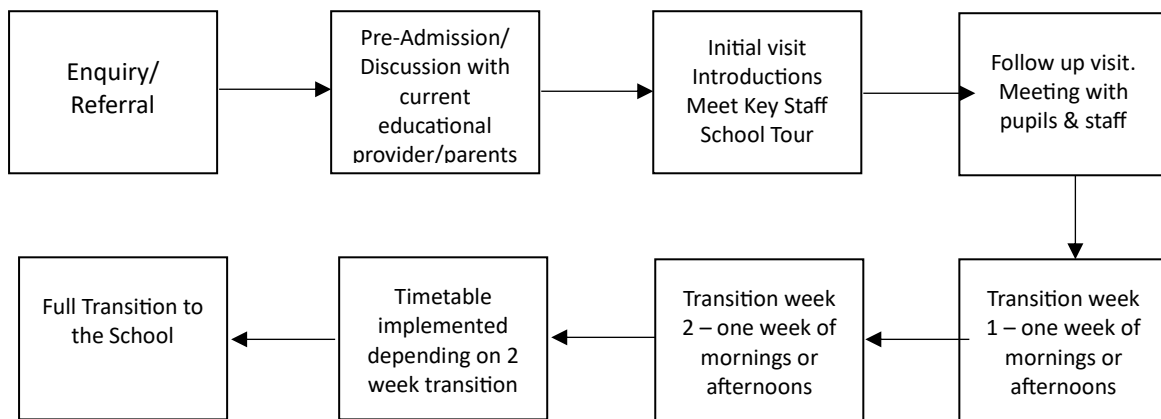


Transition Policy

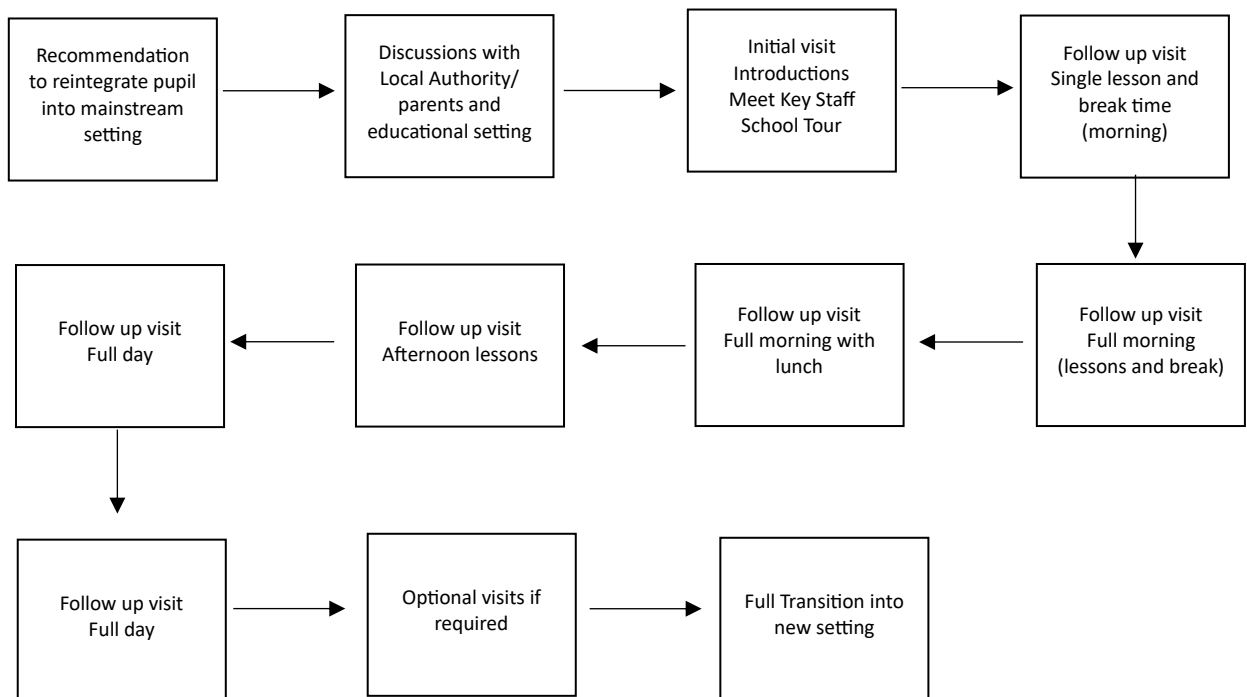
Our School provides a safe and stimulating environment for children with social, emotional, and behavioural issues. Our aim is to provide a fully individualised curriculum which supports the continued development of the child by minimising barriers to learning.

We are committed towards the successful integration of new, and existing pupils, into the school environment. Planning and preparation are essential to ensure that our learners feel safe and secure: both in their learning, and in social interactions with staff and other children.

Transition To Our School From Other Settings (Recommended time frame for transition is 2 weeks)



Transition From Our School To Other Settings (Additional visits may be recommended)



Approved by:	Tayyaba Ahmed - Director of Education	Date	12/09/2024
Last Reviewed on:	12/09/2024		
Next Review due by:	11/09/2025		

